

PROPERTY RULES AND REGULATIONS

Please enjoy your visit. Please follow these rules during your visit:

1. This property is open from dawn to dusk every day. Entry outside of these hours is trespassing. No camping is allowed.
2. Please do not litter. Remove all trash.
3. Watch your step and stay on designated trails at all times.
4. Children under 16 years of age must be accompanied by an adult.
5. Trails are for pedestrian use only. No ATVs, bikes, or horses allowed.
6. Keep pets on leashes at all times. Bag and remove all pet waste.
7. Possession or consumption of alcoholic beverages or illegal drugs is prohibited.
8. Do not remove or disturb plants or wildlife. No hunting or trapping allowed. Take only pictures.
9. Campfires and grills are prohibited.
10. Park only in designated areas. Do not block driveway to/from the parking area.
11. Enter the property at your own risk. Beware of poisonous plants, biting insects, and hazardous wildlife.

In the event of an emergency, immediately call 911 and provide the operator with the name and address of the property as shown on front of this brochure.

SPECIAL THANK YOU

In December 2019, Tar River Land Conservancy purchased the 55 acres of land that now comprise the Roberts Chapel Conservation Area. The purchase of this property and the construction of the hiking trails and other property improvements were made possible through the generous contributions and support of Tar River Land Conservancy members and volunteers, and by the following partners:



UNIVERSAL LEAF NORTH AMERICA U.S., INC.

Date of Brochure: June 2021

ROBERTS CHAPEL CONSERVATION AREA

Guide & Trail Map

Address:

792 Roberts Chapel Road
Stem, NC 27581

GPS Location:

36.197584, -78.767387

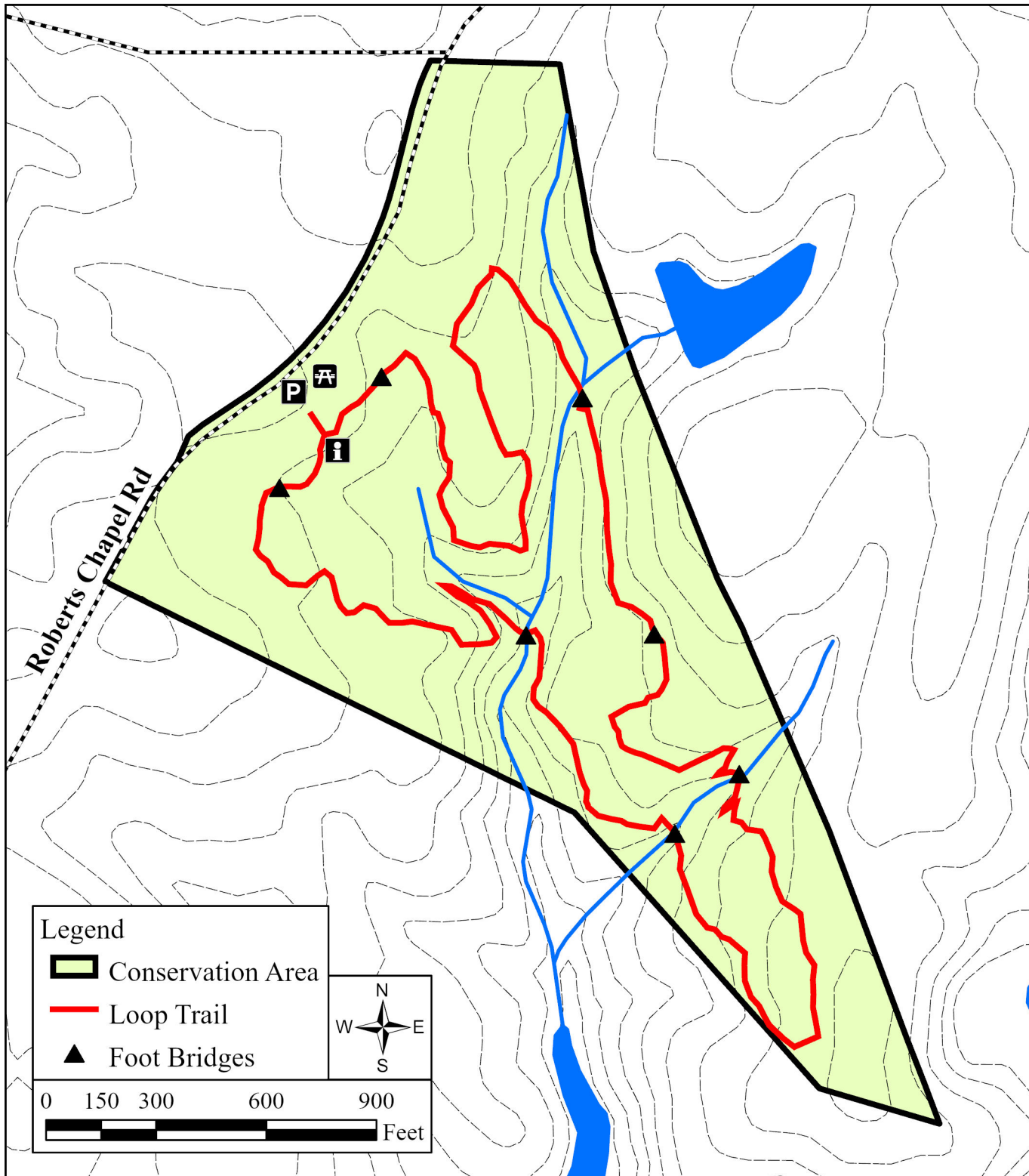


Tar River
Land Conservancy

info@tarriver.org

www.tarriver.org

919-496-5902



TRAIL INFORMATION

Trail Marker Color: RED

Difficulty: MODERATE

Distance: 1.5 MILES

The Roberts Chapel Conservation Area features a scenic loop trail that begins and ends at the parking area shown on the map on this page. The trail is marked with red aluminum markers that are visible on trees and sign posts along the trail loop. The trail winds through beautiful pine and hardwood forest areas and across several small streams. Look for a variety of ferns and wildflowers along the trail loop during the spring and summer. Return throughout the year to see how the property changes with the seasons!



Tar River
Land Conservancy

**HOW DO I
DONATE TO
TRLIC?**



Tar River Land Conservancy relies on financial gifts to maintain the hiking trails at the Roberts Chapel Conservation Area and other nature preserves. Please donate to TRLC using this QR code. Thanks for your support!