



Tar River Land Conservancy

121 N. Main Street
Louisburg, NC 27549
919-496-5902
www.tarriver.org

www.facebook.com/TarRiverLandConservancy

Tar River Land Conservancy (TRLC) was founded in September 2000 to preserve the natural and cultural resources of the Tar River Basin and surrounding areas by working in partnership with private landowners, public agencies and others to protect rural landscapes and riparian corridors. Our service area includes Person, Granville, Vance, Franklin, Warren, Halifax, Nash and Edgecombe Counties. We work directly with landowners throughout the region to protect drinking water, wildlife habitat, farms, forests and recreational open space. We achieve our objectives by acquiring conservation land and permanent conservation easements and by collaborating with other public and private entities on projects that achieve mutually beneficial land conservation objectives.

JOIN US TODAY!

Tar River Land Conservancy is a nationally accredited land trust that relies upon generous support of its members and volunteers. Become a member or volunteer today.

Please complete the backside of this form or contact us at info@tarriver.org or 919-496-5902.



Date of Brochure: December 2019

LEDGE CREEK FOREST CONSERVATION AREA

Guide & Trail Map



Tar River
Land Conservancy

TRAILHEAD #1

Address:

3189 Brogden Rd
Stem, NC 27581

GPS Location:

36.191422, -78.717794

TRAILHEAD #2

Address:

3258 Old NC 75
Stem, NC 27581

GPS Location:

36.193417, -78.732008

SPECIAL THANK YOU

Between 2013 and 2018, Tar River Land Conservancy purchased seven tracts of land totaling 398 acres that now comprise the Ledge Creek Forest Conservation Area. Over the past century, this land passed through the hands of several generations of caring owners, including the Moore, Summers, Coley, Hobgood, Doughton, Meadows, Gooch, and Stem families.

The purchase of these properties and the construction of the hiking trails and other property improvements were made possible through the generous contributions and support of Tar River Land Conservancy members and volunteers and the following partners:



TRAIL INFORMATION

All trails are accessed from parking areas located at trailheads. Each trail is marked with colored aluminum markers on trees and sign posts to guide hikers. See the map included in this brochure for the general location of the trails described below.

Trailhead #1

3189 Brogden Rd, Stem, NC 27581

Ledge Creek Trail

Trail Marker Color: blue
Difficulty: moderate
Distance: 1.5 miles

Pond Trail

Trail Marker Color: yellow
Difficulty: easy
Distance: 1.3 miles

Bypass Trail

Trail Marker Color: green
Difficulty: easy
Distance: 0.2 miles

Trailhead #2

3258 Old NC 75, Stem, NC 27581

Ledge Creek Loop

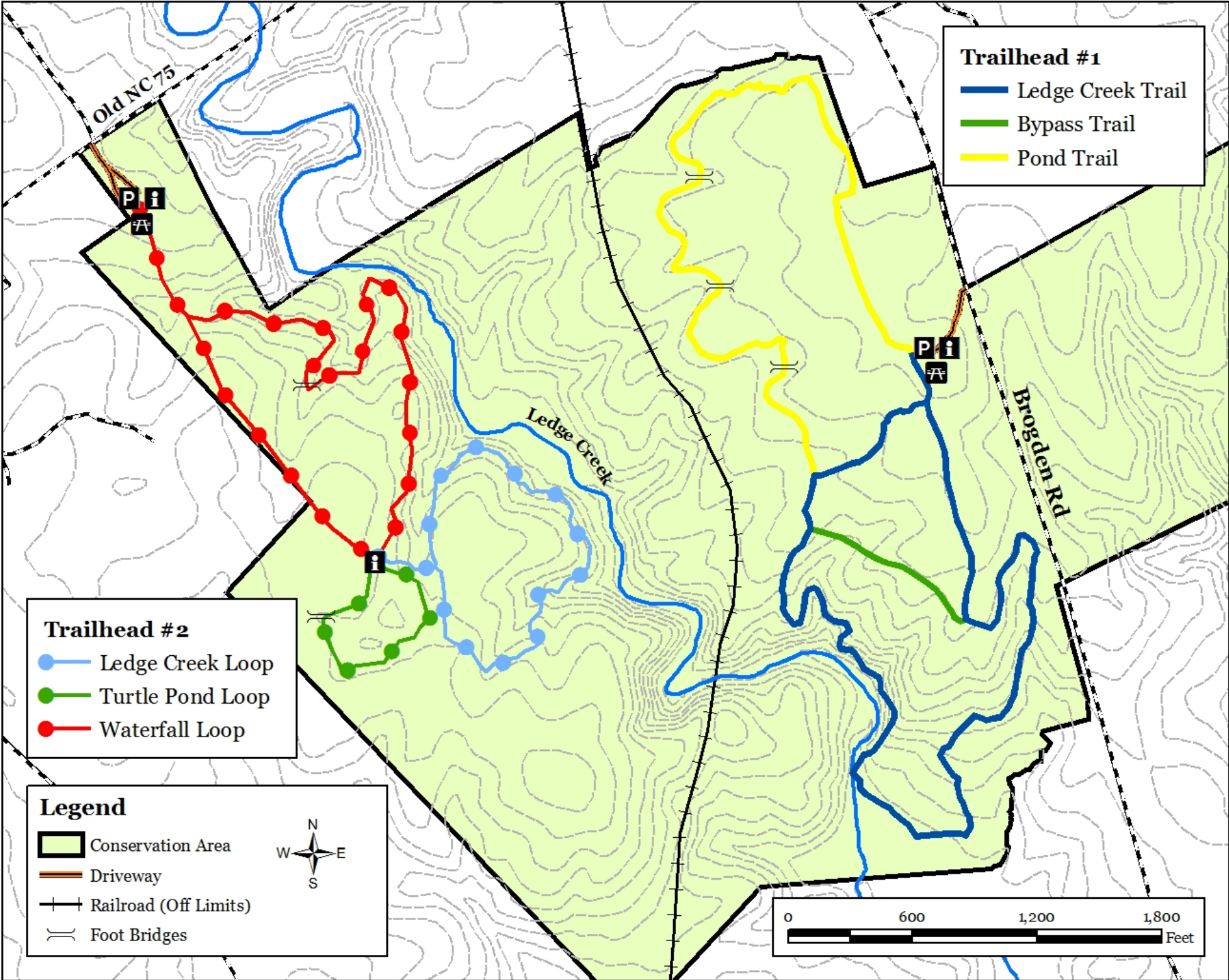
Trail Marker Color: blue
Difficulty: moderate
Distance 0.7 miles

Turtle Pond Loop

Trail Marker Color: green
Difficulty: easy
Distance: 0.3 miles

Waterfall Loop

Trail Marker Color: red
Difficulty: easy
Distance: 1.0 miles



MEMBERSHIP FORM

Yes, I'd like to support Tar River Land Conservancy to protect more land and water in my community! Please accept my tax deductible gift in the amount of:

- ☐ \$5,000
- ☐ \$100
- ☐ \$1,000
- ☐ \$50
- ☐ \$500
- ☐ \$20 (student)
- ☐ \$250
- ☐ \$_____

Name _____

Address _____

City _____

State _____ Zip _____

Email _____

Phone _____

- ☐ Enclosed is my check made payable to
Tar River Land Conservancy
- ☐ My donation was made online at
www.tarriver.org
- ☐ Please charge my donation to my:
☐ Visa ☐ MasterCard ☐ AMEX ☐ Discover

Name on card _____

Card Number _____

Expiration Date _____

Signature _____

- ☐ This gift is (in memory / in honor) of:

Please send an acknowledgment of this gift to:

Please mail this form and your charitable gift to:
Tar River Land Conservancy
P.O. Box 1161
Louisburg, NC 27549

Financial information about this organization and a copy of its solicitation license are available from the State Solicitation Licensing Branch at 919-807-2214. This license is not an endorsement by the State.